



Central Baptist *Church*

MONTHLY NEWSLETTER | CENTRAL BAPTIST CHURCH | OCTOBER 2017

Up Front

Injury, illness, loss of a job can happen to any person or any family at any time. It often severely impacts the level of income coming into a household budget and even with careful planning the bills add up quickly. Sometimes the event is less traumatic, a need many of us handle out of an emergency fund. The car breaks down, the refrigerator needs to be replaced, or a miscalculation when deciding on a purchase are not unusual events for any of us. But for those who work in low paying jobs, that may be enough to throw the checkbook off course and into the stressful cycle of which bill not to pay this month.

Sometime family can help, but when they can't or that is not enough, where do you turn, when the rent is past due or having the utilities shut off is a real possibility? If you are part of our church family you can contact one of the pastors for encouragement, prayer and often some financial assistance from the fellowship fund. The fellowship fund is a fund, separate from all other church accounts and used only for the purpose of providing financial assistance to members of the church and the community in times of financial need... cont. on next page.

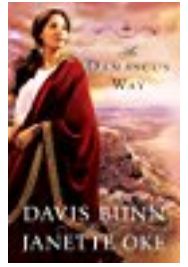
Church Events

- Oct 9- LCT Meeting
- Oct 18- Annual Business Meeting
- October 26-Q Commons Conference
- Nov 4-Mental Health First Aid
- Nov 5-Youth Group Fall Fundraiser

Off the Shelf

Janette Oke Fiction

Janette Oke pioneered inspirational fiction and is the leading author in the category today. *Love Comes Softly*, her first novel, has sold over one million copies. Janette is now the bestselling author of over 70 books, 32 of which have been translated into fourteen languages. Her books have sold over 22 million copies.. She received the 1992 President Award from the Evangelical Christian Publishers Association for her significant contribution to Christian fiction, the 1999 CBA Life Impact Award and has been awarded the Gold Medallion Award for fiction. There have been 11 movies and a tv series on the Hallmark Channel based on her books.



With the recent donation by Dixie Dalbey, the number of fiction books by this author has increased from 32 to 50. All the book series are now complete. The books consist of Love Come Softly Series (8 books), Seasons of the Heart Series (4 books), Canadian West Series (6 books), Women of the West Series (12 books), Prairie Legacy Series (4 books), Song of Arcadia Series (5 books), Acts of Faith Series (3 books), Return to the Canadian west Series (3 books), Stand along novels (5 books), and a biography of Janette Oke by her daughter, Laurel Oke Logan. These books may be found on top of the Fiction Section book cases in the center of the Library. Pick up a “Checklist” so you can keep track of your reading.
Jim Filler - On behalf of the Volunteer Library Team

Up Front Cont.

The priority is given first to members of the church family and it provides for these kinds of needs:

- rent, utility, food, transportation and medical bill assistance to members of the church family and employees of Children’s House with consultation with one of the pastors.
- meals through the Wednesday Night Dinners to those who cannot afford to purchase a meal.
- a gift to Contact Ministries each month to provide resources for those from the community we refer for assistance

Many have been blessed because of your gifts to this fund. Many have been able to remain in their home, maintain employment, have a meal to eat because gifts from the fund helped them through a difficult financial time in their life or the life of their family. We thank you!

The only source of funds for the fellowship fund is what members of the church give directly to the fund. To provide a gift to the fellowship fund, to be used for the needs described above, simply direct your gift to Central Baptist Church and designate it for the fellowship fund. I share this with you in case it is a need that speaks to your heart and you have funds you would want to direct for these kinds of needs. When you are aware of a particular family or individual in need and you would like to direct a gift to anonymously, the fellowship fund is also great way to do that.

Thank you again for all the ways you use the gifts God gave you to bless others.
Together in Christ, Mary Ellen

Happy Fall from the Counseling Corner!
What is the number one thing that couples argue about? The answer is: nothing!

Over his years of studying couples, Dr. John Gottman has found that couples usually don't argue over specific topics like money, household chores, or parenting. The actual basis of the arguments between couples is a failure to connect emotionally.

Dr. Gottman compares our emotional relationships to a bank account; when our partner attempts to connect and we accept their attempt, a deposit is made. However, if we turn away from the attempt, it is considered a withdrawal from the emotional bank account. Just like a financial bank account, an emotional bank account with a surplus is good while an emotional bank account that has a zero balance is bad news. If we accept more of our partner's bids for connection and build up our account, our partner is more likely to give us the benefit of the doubt and continue to see the relationship in a positive light even in hard times.

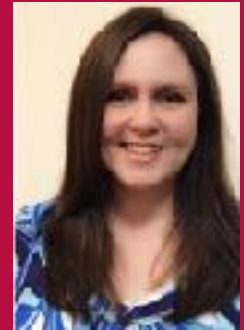
In the article, "You Don't Have to Be Rich to Have an Emotionally Wealthy Marriage," Kyle Benson discusses Dr. Gottman's idea of the emotional bank account, shows you how to measure your account balance, and gives examples of how to increase your balance. To read more click [here](#).

Blessings,
Stephani Cave, LCPC
ConnectEdPAIRS
217-972- 4851
stephani@cbcchurchfamily.org



The Children's House is looking for volunteers to help with their weekly chapel! Chapel times are every Tuesday at 11am. If you are interested please contact Judy Vlach at judy@cbcchurchfamily.org.

Also, the Children's House Staff are decorating their doors for the fall! Be sure to go check out all of the fun decorations!



Birthdays And Anniversaries

10/01	Hannah McDaniel	10/03	Brad & Adria Martin
10/07	Jackie Crossin	10/09	Tom & Nancy Langford
10/11	Reg Mills	10/14	David & Dixie Dalbey
10/13	Amberlee Southwell	10/19	David & Ruth Ficke
10/14	Lin Glomski	10/28	Don & Judith Anderson
10/21	Nancy Dunbar		
10/21	Steve Sheffield		
10/22	Mike Large		
10/23	John Martin		
10/24	Jan Sherrow		
10/29	Debbie Aldag		

Our Condolences

Our hearts and prayers go out to the following families who lost loved ones during the month of October. Please keep them in your thoughts and prayers following this difficult time.

-The family and friends of Helen Hillner

But we do not want you to be uninformed about those who are asleep, that you may not grieve, as others do who have no hope.

1st Thessalonians 4:13

Around CBC

Graham - Compass at Westminster Presbyterian - The Compass program for Graham students is a partnership between Compass for Kids, Central, and Westminster. The program is held each Tuesday from 3 to 6:30 PM. Volunteers can serve for a portion of that time in a variety of different roles. To find out more information email Molly Berendt molly@compass4kids.org

Saturday, November 4th - 9 AM to 5 PM - Mental Health First Aid

This is an opportunity to receive training that could help you become a better equipped neighbor and friend.

On November 4th, Central is partnering with Memorial Behavioral Health to host a Mental Health First Aid Course. You can register for the class online at:

www.memorialbehavioralhealth.org/Professionals/Mental-Health-First-Aid.

The cost for this class is \$16.95.

Graham Elementary - we are working to create a new lunch mentoring program with Graham. Our goal is ten volunteers who will commit to having lunch with a student once a week. If you would like to volunteer please let Josh Sabo know josh@cbcchurchfamily.org

New Berlin Elementary - NBES has started a new program called "Lunch Bunch" and is seeking volunteers to commit to lunch one day a week with an elementary student. To sign up and get more information email Casey Wills cwills@cusd16.k12.il.us

Kumler Food Pantry-October

When money is tight and it is difficult to feed your family, personal care products are a luxury that one often does without or uses in a very limited way. So for the month of October we will be emphasizing personal care products-soap, shampoo, toothpaste, deodorant. When next you are at the grocery store, etc. please think of these people. Remember too that any nonperishable food items are welcome.

A special thanks to all who came and helped with the Fall Family Fun Fest! The event was a huge success, and it was all able to run smoothly because of the awesome group of volunteers who dedicated multiple hours of their time.

For monthly couples, individual, and family tips, please sign up for our e-newsletter. For daily relationship tips, follow us on facebook. For more information about any ConnectEdPAIRS service, please visit our website at www.connectedpairs.com, stop by, call, or email me in the counseling office. I look forward to talking with you soon.

Thursday, October 26th - 7 to 9 PM - Q Commons: Healing Our Divided Nation Conference

Central and The Outlet are hosting a nationwide conference from Q in hopes of creating conversation in Springfield around the theme of "Healing Our Divided Nation." Q Commons is an opportunity for you to gather alongside friends, neighbors, and colleagues to become informed and learn how to advance good right here in Springfield. We will join more than 150 other cities around the world in this one of a kind event that is truly global and local. The conference will include 3 presentations from national speakers and 3 from Springfield leaders. Tickets will cost \$15 per person.

Feast of Plenty is coming up fast! Please be in prayer on how you can help with this amazing event!

What's Happening

Monthly

AB Men's Breakfast

1st & 3rd Saturday; 8 am; (Merriam Hall)

Hegarty Circle

2nd Monday; 9:30 am; (Weber Lounge)

Beth Long Circle (New Berlin)

3rd Thursday evening; various locations

Newsletter

All submissions must be made by the 15th of every month

Girl Scouts

1st & 3rd Tuesday; 6 pm; (New Berlin)

Weekly

SUNDAY

9:15a Sunday School (Downtown)
10:15a Fellowship Time (Downtown)
10:45a Worship Service (Downtown)
9:30a Worship Service (New Berlin)
10:30a Sunday School (New Berlin)
6:00p Youth (New Berlin)
Meet bi-weekly

TUESDAY

3:00p Compass

WEDNESDAY

4:45p Wednesday Night Dinner

6:30p Choir Practice

THURSDAY

7:00p Worship Team Rehearsal

October 9: LCT

5:30pm Webber Lounge

October 18: Annual Business Meeting

6pm Merriam Hall

October 26-Q Commons Conference

7pm-CBC Downtown

November 4: Mental Health First Aid

9am-CBC

November 5: Youth Group Fall Fundraiser

11am- Sangamon County Fairgrounds

All events at Springfield location unless otherwise noted.

Visitor's Info and FAQ

We are one church in **two locations**, with campuses in Springfield and New Berlin, IL. Together, we are a church family loving God, loving people, and serving the world in Jesus' name. All are welcome to worship with us. We gather each Sunday to love God in worship at our Springfield Campus (located at 501 South 4th Street, Springfield, IL) at 10:45am and at our New Berlin Campus (located at 600 W Birch Street, New Berlin, IL) at 9:30am. When you visit our church you are our guest. Our members and regular worshipers participate in a financial offering during the worship services, but this is not expected of our guests.

Our desire is to be a church that helps people know and experience God in a meaningful way. If there is anything that we can do to help you on your life and faith journey, please let us know.



www.facebook.com/cbcchurchfamily

twitter.com/CBCchurchfamily



cbcchurchfamily.org

Office Hours - Monday
through Friday
8:00 AM – 5:00 PM

Phone
217-523-3639

Email
office@cbcchurchfamily.org

Children's House –
<http://www.childrenshouse.org>

Phone
217-523-0122

Email
judy@cbcchurchfamily.org